



SWITZERLAND 



Bergonzo Charles SA

For all your pulverization problems

Nozzles for fuel oil burners

Pulverization



Flyback nozzles :

To allow perfect function never close the flyback completely

Bergonzo Charles SA, Beausite 3, CH-2740 Moutier

Phone : +41 (0) 32 494 60 00, Fax: +41 (0) 32 494 60 05

E-mail : bergonzo@bergonzo.ch Website : www.bergonzo.ch



Type R

Nozzles for fuel oil burners

Type	Pulverization angle			
	30°	45°	60°	80°
R	0,40 - 1,50	0,40 - 3,75	0,40 - 3,75	0,40 - 3,75
RC		4,00 - 12	4,00 - 30	4,00 - 30

Standard output in USG/hr										
0,40	0,75	1,25	2,00	3,25	5,00	7,50	10	12,5	17	24
0,50	0,85	1,35	2,25	3,50	5,50	8,00	10,5	13	18	26
0,55	1,00	1,50	2,50	3,75	6,00	8,50	11	14	19	28
0,60	1,10	1,65	2,75	4,00	6,50	9,00	11,5	15	20	30
0,65	1,20	1,75	3,00	4,50	7,00	9,50	12	16	22	

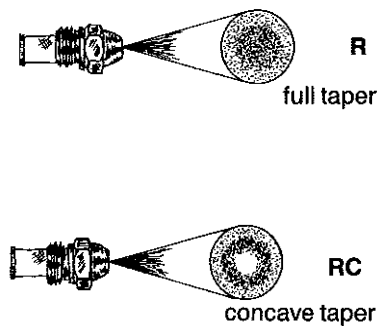
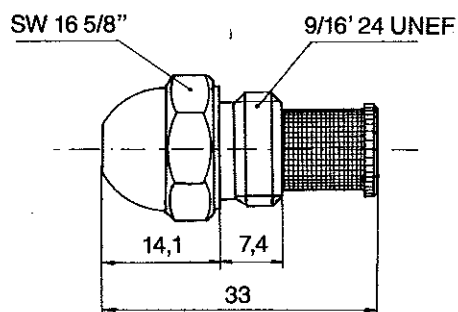
Output at pressure of 7 bar : 1 USG = 3,785 l.
 Viscosity : 1,3 ° E

Stainless steel filter :
 Net density 200 stitches up to 2,00 USG/hr and net density 120 stitches above 2,00 USG/hr
 Packing : 12 and 20 pieces in cardboard box

Each nozzle is tested individually

Example for placing your orders :

Number of pieces	Type	Angle	Output
20	R	45°	1,10 USG/hr





Type D saphir

Nozzles for fuel oil burners

Thanks to the sapphire insert this nozzle saves energy and respects ecological standards

Type	Pulverization angle	
		30°
D	0,50 - 50	0,40 - 50

Standard output in USG/hr													
0,40	0,75	1,25	1,75	2,75	4,00	6,00	8,00	10	12	16	20	28	40
0,50	0,85	1,35	2,00	3,00	4,50	6,50	8,50	10,5	13	17	22	30	45
0,55	1,00	1,50	2,25	3,25	5,00	7,00	9,00	11	14	18	24	33	50
0,60	1,10	1,65	2,50	3,50	5,50	7,50	9,50	11,5	15	19	26	36	
0,65				3,75									

Output at pressure of 7 bar : 1 USG = 3,785 l.

Viscosity : 1,3 ° E

Stainless steel filter :

Net density 200 stitches up to 2,00 USG/hr and 120 stitches above 2,00 USG/hr

Packing : 12 pieces and 20 pieces in cardboard box

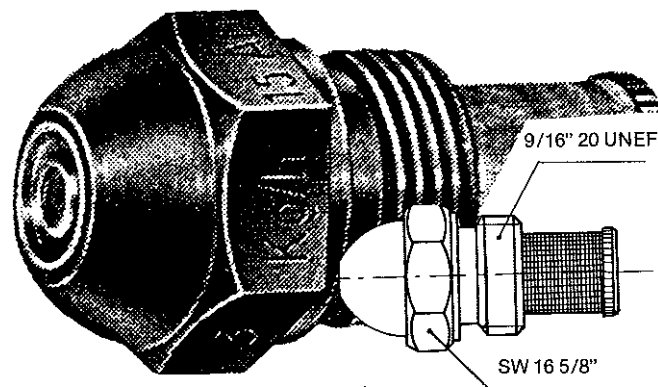
Each nozzle is tested individually

Example for placing your orders :

Number of pieces	Type	Angle	Output
40	D	60°	1,50 USG/hr

BENEFITS OF THE SAPPHIRE NOZZLE

- 1) Finer pulverization
- 2) Improved combustion
- 3) Energy saving
- 4) High resistance to wear and corrosion





SWITZERLAND 



Type A

Flyback nozzles

Sapphire insert

Type	Pulverization angle	
	45°	60°
A3	3 - 250	3 - 250
A4	25 - 250	25 - 250

3	10	30	50	70	110	150	190	230
4	15	35	55	80	120	160	200	240
5	20	40	60	90	130	170	210	250
7,5	25	45	65	100	140	180	220	

Initial pressure : 20 bar
1 kg = 0,31 USG

Viscosity : 1,3 ° E

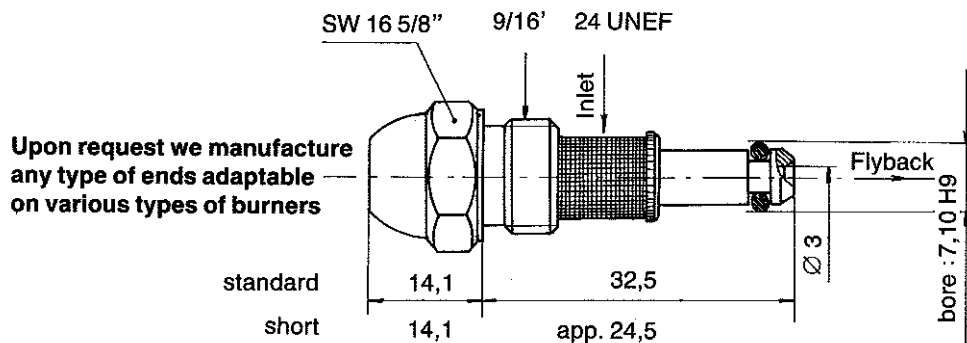
Variable output
Max. : flyback completely closed
Min. : flyback pressure 3 bar
A3 : 1/3 of max. output
A4 : 1/4 of max. output

Stainless steel filter :
Net density 200 stitches up to 10 kg/hr and 120 stitches above 10 kg/hr

Packing: 20 pieces in cardboard box

Example for placing your orders :

Number of pieces	Type	Ratio	Angle	Output
40	A	3	60°	120 kg/hr





Type B

Industrial flyback nozzles

With or without needle

Type	Pulverization angle	
	30°	45° - 60° - 80°
B3	100 - 1000	20 - 1000
B5	100 - 1000	20 - 1000

Standard output in kg/hr									
20	50	90	130	200	300	400	500	600	800
25	60	100	140	225	325	425	525	650	850
30	70	110	150	250	350	450	550	700	900
40	80	125	175	275	375	475	575	750	950
									1000

Initial pressure : 25 bar

Variable output

Max. : flyback completely closed

Min. : flyback pressure 3 bar

Viscosity : 2 ° E

B3 : 1/3 of max. output

B5 : 1/5 of max. output

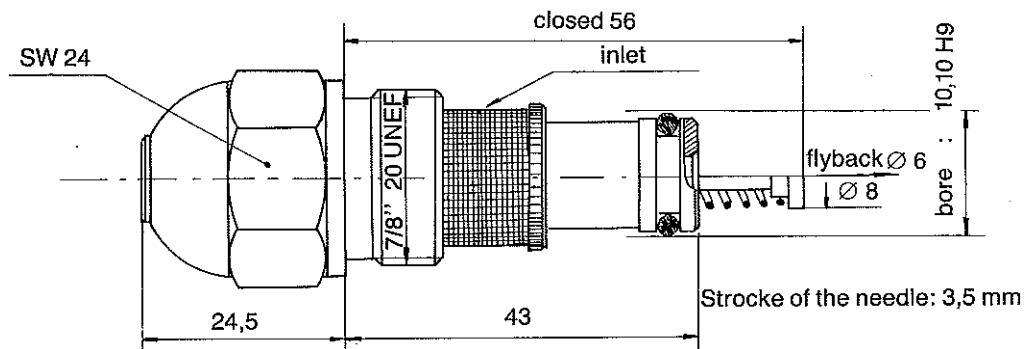
With filter : up to 100 kg/hr and upon request above 100 kg/hr

Packing : Individual plastic box

Upon request we supply: AA = with needle and SA = without needle

Example for placing your orders :

Number of pieces	Type	Ratio	Angle	With needle	Output
40	B	5	60°	AA	125 kg/hr



Type C



Industrial flyback nozzles With or without needle

Type	Pulverization angle			
	45°	60°	80°	120°
C3	350 - 2000	350 - 2000		
C5	350 - 1400	350 - 1400	xxxx	xxxxx

Standard output in kg/hr								
350	500	650	800	950	1100	1250	1500	1800
400	550	700	850	1000	1150	1300	1600	1900
450	600	750	900	1050	1200	1400	1700	2000

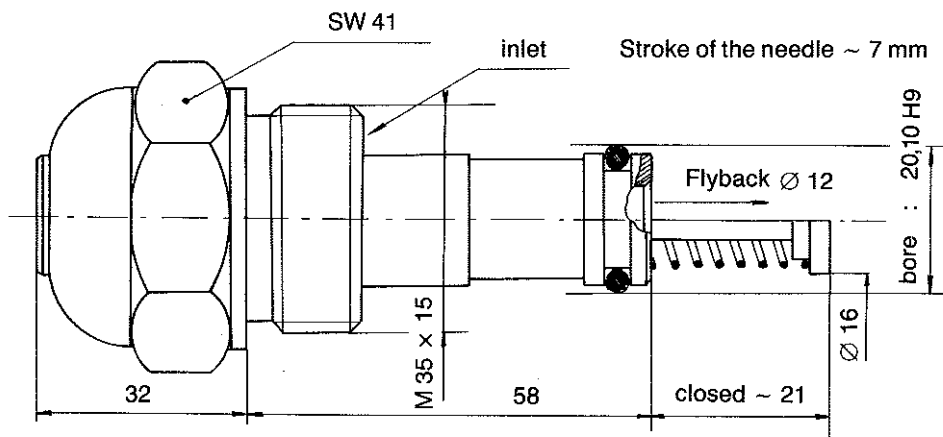
Initial pressure : 25 bar
Viscosity : 2 ° E

Variable output :
Max. : flyback completely closed
Min. : flyback pressure 3 bar
C3 = 1/3 of max. output
C5 = 1/5 of max. output

Upon request we supply: AA = with needle/ SA = without needle

Example for placing your orders :

Number of pieces	Type	Ratio	Angle	With needle	Output
40	C	3	45°	AA	950 kg/hr



Type H



SWITZERLAND 



Industrial flyback nozzles

Type	Pulverization angle			
	30°	45°	60°	80°
H3	75 - 1000	75 - 1000	75 - 1000	75 - 1000
H5	75 - 700	75 - 1000	75 - 700	75 - 700

Standard output in kg/hr							
75	150	225	300	450	600	700	850
100	175	250	350	500	650	750	900
125	200	275	400	550	675	800	950
							1000

Initial pressure : 25 bar
Viscosity : 2 ° E

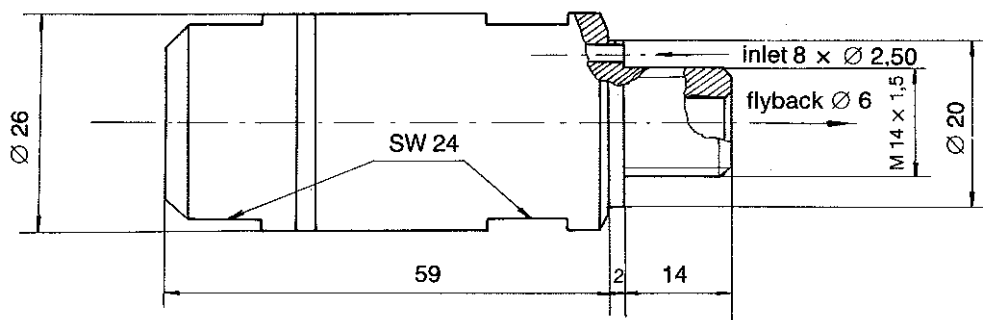
Variable output :
Max. : flyback pressure 1 bar
Min. : flyback pressure 3 bar
H3 = 1/3 max. output
H5 = 1/5 max. output

Packing : Individual plastic box

For EH orders we also supply contents separately

Example for placing your orders :

Number of pieces	Type	Ratio	Angle	Output
40	H	3	45°	150 kg/hr



Type M 14



Industrial flyback nozzles

Type	Pulverization angle	
	45°	55°
M 14/3 saphir	30 - 350	
M14/5 saphir	30 - 350	35 - 800
M 14/3	375 - 1200	
M14/5		750 - 950

Standard output in kg/hr								
30	50	120	200	300	450	650	850	1050
35	60	140	225	350	500	700	900	1100
40	80	160	250	375	550	750	950	1150
45	100	180	275	400	600	800	1000	1200

Initial pressure : 25 bar
 Viscosity : 2 ° E

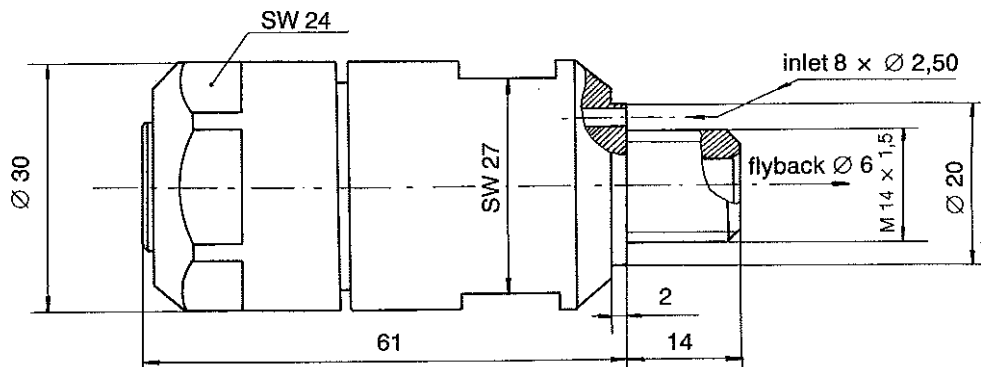
Variable output:
 Max. : flyback pressure 1 bar
 Min. : flyback pressure 3 bar
 M 14/3 = 1/3 of max. output
 M 14/5 = 1/5 of max. output

Packing : individual cardboard box

For EM 14 orders we also supply contents separately

Example for placing your orders:

Number of pieces	Type	Ratio	Angle	Output
40	M 14	3	45°	100 kg/hr



Type M 30



Industrial flyback nozzles

Type	Pulverization angle	
	45°	55°
M30 1/5	700 -2000	800 - 2000

Standard output in kg/hr				
700	950	1150	1350	1700
800	1000	1200	1400	1800
850	1050	1250	1500	1900
900	1100	1300	1600	2000

Initial pressure : 25 bar
Viscosity : 2 ° E

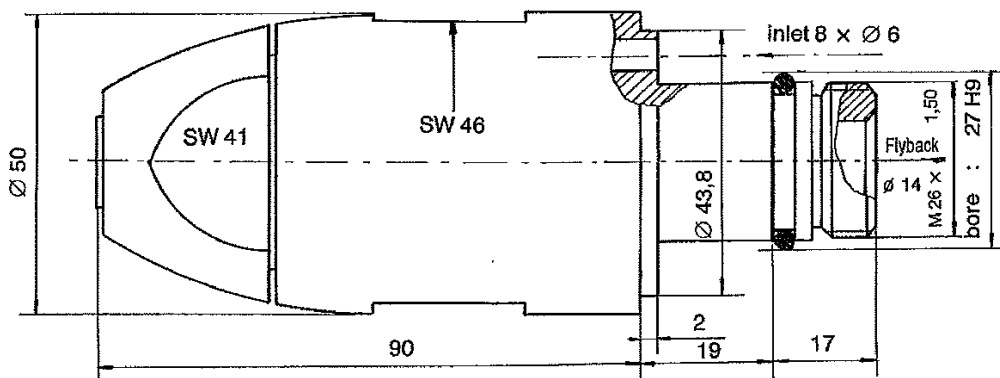
Variable output

Max. : flyback pressure -1 bar
Min. : flyback pressure 3 bar
M30 1/5 = 1/5 of max. output

For EM 30 orders we also supply contents separately

Example for placing your orders :

Number of pieces	Type	Angle	Output
40	M30	45°	1000 kg/hr



Type S



Industrial flyback nozzles

Type	Pulverization angle	
	45°	60°
S 5	60 -1000	60 - 1000

Standard output in kg/hr						
60	140	225	350	550	750	950
80	160	250	400	600	800	1000
100	180	275	450	650	850	
120	200	300	500	700	900	

Initial pressure : 25 bar
Viscosity : 2 ° E

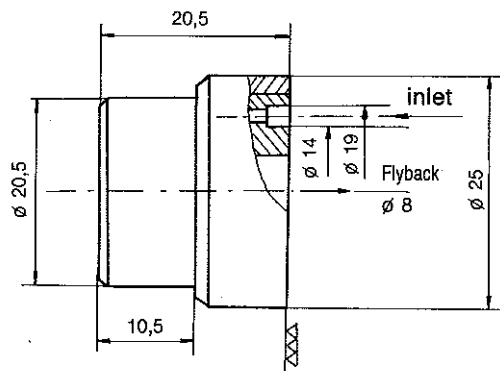
Variable output

Max. : flyback completely closed
Min. : flyback pressure 3 kg/cm²
S5 : 1/5 of max. output

Packing : nozzle tip and baffle manufactured together and numbered

Example for placing your orders :

Number of pieces	Type	Angle	Output
40	S	60°	120 kg/hr



Kg/hr output of nozzles for fuel oil burner and potential of thermal efficiency calculated for a 90% combustion



Nozzles output in USG	Pump pressure in kg/cm ²							
		7	10	12	14	16	18	20
0,40	kg/h	1,28	1,49	1,62	1,79	1,91	2,00	2,01
	kcal/h	11,520	13,410	14,580	16,110	17,190	18,000	18,090
0,50		1,58	1,90	2,05	2,14	2,32	2,40	2,46
		14,220	17,100	18,450	19,260	20,880	21,600	22,140
0,60		1,91	2,30	2,55	2,72	2,90	3,02	3,10
		17,190	20,700	22,050	24,480	26,100	27,180	27,900
0,65		2,11	2,40	2,76	2,95	3,09	3,29	3,41
		18,990	21,600	24,840	26,550	27,810	29,610	30,690
0,75		2,38	2,89	3,18	3,40	3,57	3,78	3,91
		21,420	26,010	28,620	30,600	32,130	34,020	35,190
0,80		2,60	2,95	3,40	3,63	3,79	3,96	4,04
		23,400	26,550	30,600	32,670	34,110	35,640	36,360
0,85		2,72	3,27	3,57	3,82	4,07	4,30	4,42
		24,480	29,430	32,130	34,380	36,630	38,700	39,780
1,00		3,20	3,85	4,25	4,50	4,78	5,03	5,23
		28,880	34,650	38,250	40,500	43,020	45,270	47,070
1,20		3,87	4,63	5,10	5,44	5,74	6,04	6,30
		34,830	41,670	45,900	48,960	51,660	54,360	56,700
1,35		4,33	5,20	5,74	6,12	6,46	6,80	7,07
		38,970	46,800	51,660	55,080	58,140	61,200	63,630
1,50	Kg/h	4,80	5,78	6,38	6,80	7,19	7,56	7,86
	kcal/h	43,200	52,020	57,420	61,200	64,710	68,040	70,740
1,65		5,31	6,38	7,01	7,48	7,90	8,34	8,67
		47,790	57,420	63,090	67,320	71,100	75,060	78,030
1,75		5,61	6,76	7,44	7,95	8,41	8,89	9,23
		50,490	60,840	66,960	71,550	75,690	80,010	83,070
2,00		6,42	7,70	8,50	9,10	9,60	10,10	10,45
		57,780	69,300	76,500	81,900	86,400	90,900	94,050
2,25		7,22	8,67	9,56	10,20	10,80	11,40	11,80
		64,980	78,030	86,040	91,800	97,200	102,600	106,200
2,50		8,04	9,65	10,59	11,30	11,99	12,61	13,10
		72,360	86,850	95,310	101,700	107,910	113,490	117,900
3,00		9,65	11,55	12,70	13,60	14,40	15,11	15,69
		86,850	103,950	114,300	122,400	129,600	135,990	141,210
3,50		11,21	13,47	14,81	15,85	16,75	17,61	18,30
		100,890	121,230	133,290	142,650	150,750	158,490	164,700
4,00		12,82	15,41	16,95	18,10	19,12	20,02	20,09
		115,380	138,690	152,550	162,900	172,080	180,180	180,810
4,50		14,45	17,32	19,10	20,04	21,50	22,70	23,29
		130,050	155,880	171,900	180,360	193,500	204,300	209,520
5,00		16,10	19,30	21,20	22,65	24,00	25,25	26,20
		144,900	173,700	190,800	203,850	216,000	227,250	235,800
5,50		17,70	21,20	23,30	24,90	26,40	27,70	28,80
		159,300	190,800	209,700	224,100	237,600	249,300	259,200
6,00		19,60	23,17	25,50	27,20	28,75	30,03	31,45
		176,400	208,530	229,500	244,800	258,750	270,270	283,050
6,50	Kg/h	21,10	24,00	27,64	29,50	30,90	32,90	34,10
	kcal/h	189,900	216,000	248,760	265,500	278,100	296,100	306,900